



Site-Specific Shared Network Asset Categories

Clarification sought on current practice

Stay connected...



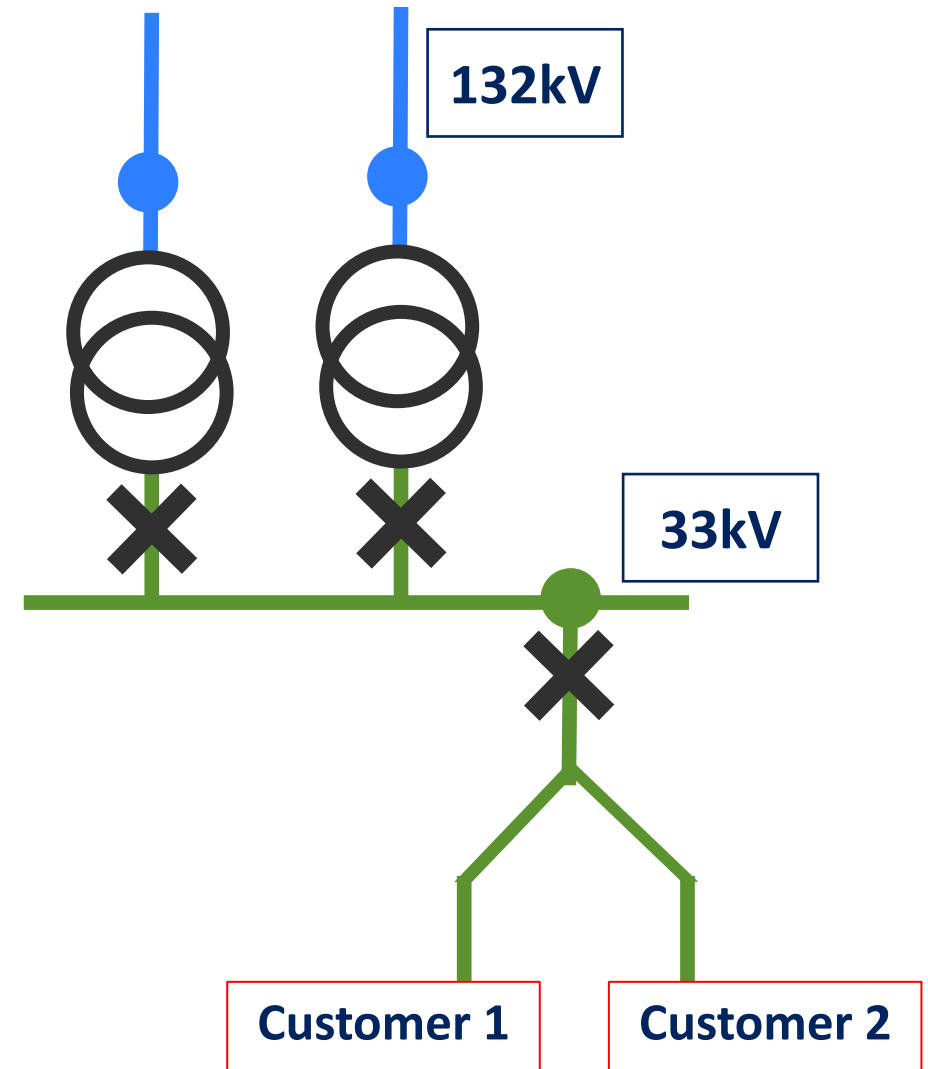
www.enwl.co.uk



- As per DCUSA, under the EDCM: A Connectee's notional site-specific shared network asset value is the value of network assets that are deemed to be used by that Connectee, other than sole use assets.
- DCUSA defines five network levels as below:
 - Level 1 comprises 132 kV circuits.
 - Level 2 comprises substations with a primary voltage of 132 kV and a secondary voltage of 22 kV or more.
 - Level 3 comprises circuits of 22 kV or more but less than 132 kV.
 - Level 4 comprises substations with a primary voltage of 22 kV or more but less than 132 kV and a secondary voltage of less than 22 kV.
 - Level 5 comprises substations with a primary voltage of 132 kV and a secondary voltage of less than 22 kV.
- The category code defines which levels are used beyond the SUA, which assets are paid for, and through which tariff element.



- This query concerns an issue of categorisation of an EDCM connection where there is some ambiguity in the legal text.
- In the case of a customer connected to a bulk supply point substation but with a connection that is banked with another circuit such that both share the same 33kV circuit breaker, what is the correct EDCM category under schedule 17/18?
- The hypothetical connection is illustrated to the right:
- In this situation are the customers 1100, or 1110?
- We would like to understand what the generally accepted view is on this.





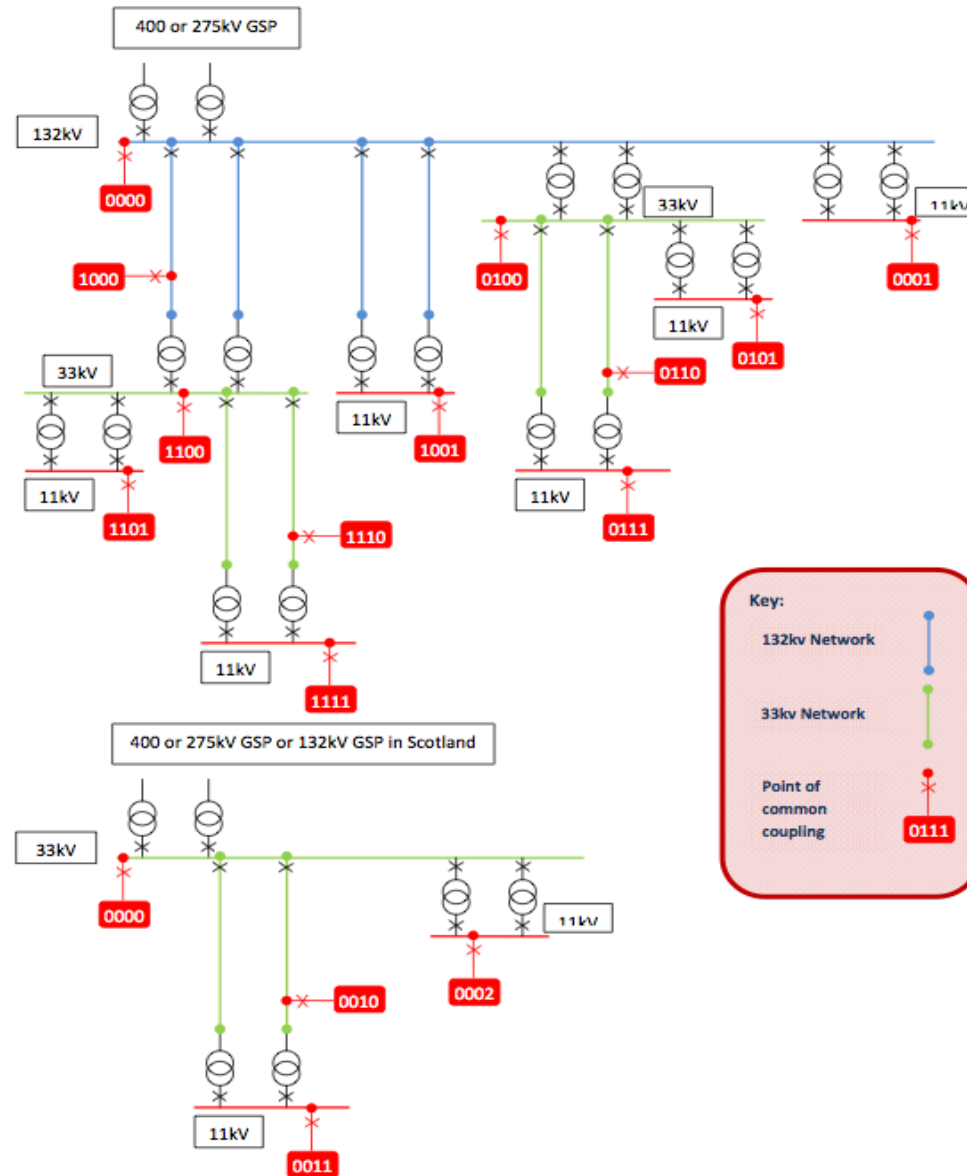
- Customers are categorised into various categories including the below:

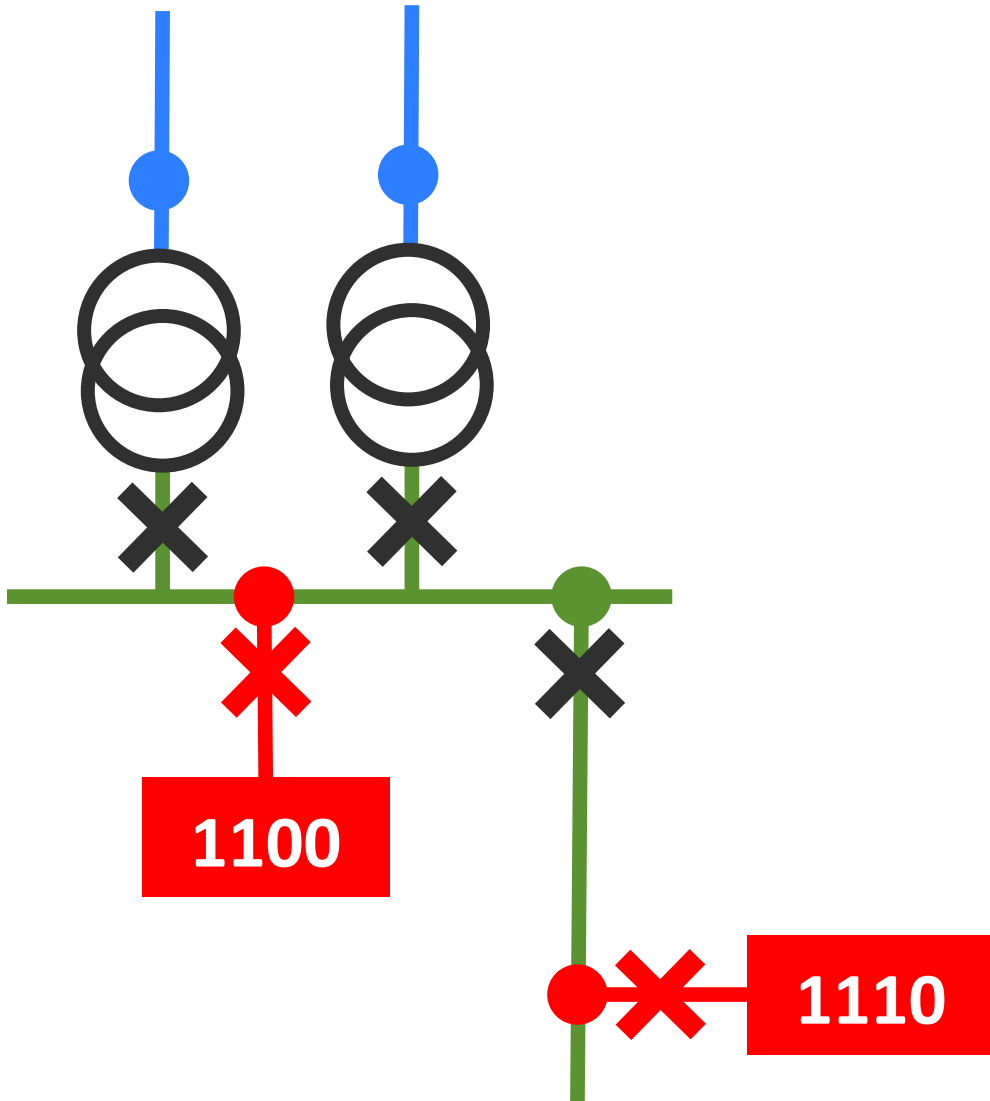
Category 1100	Point of Common Coupling at 22 kV or more on the secondary side of a substation where the primary side is attached to a 132 kV circuit.
Category 1110	Point of Common Coupling at a voltage of 22 kV or more, but less than 132 kV, not at a substation, fed from a substation whose primary side is attached to a 132 kV distribution circuit.

- The ambiguity in this case arises because the customer is connected 'at the substation' but not directly to the busbar (the 'secondary side of the substation'), instead there is a piece of shared 33kV circuit (the shared circuit breaker).
- Depending on interpretation, either category might fit this case.



- DCUSA provides this illustrations of the various categories.
- The query concerns 1100 and 1110.





- Zoomed in the relevant categories are illustrated to the left.
- Blue is 132kV, green 33kV.